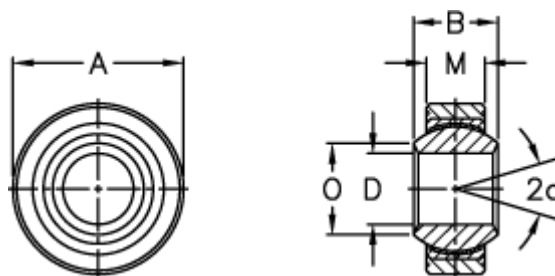


Article number: 03404035

Description: Fluro Rod end GLRSW 35

Measures



A	= 78	Static load C0 (kN) = 343
a (degrees)	= 19	Weight = 850
B	= 43	
D	= 35	
Dynamic load C (kN)	= 206	
M	= 30	
O	= 37.7	
Permissible rpm	= 110	